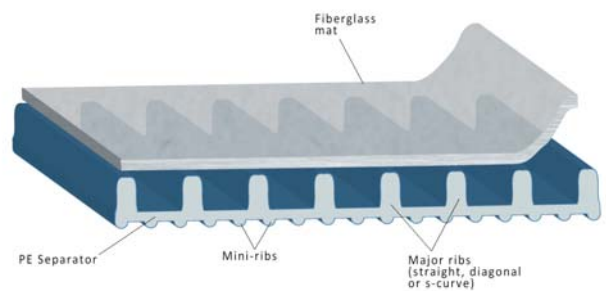




## Polyethylene Separator with Laminated Glass Mat for Heavy Duty and Start-Stop Applications

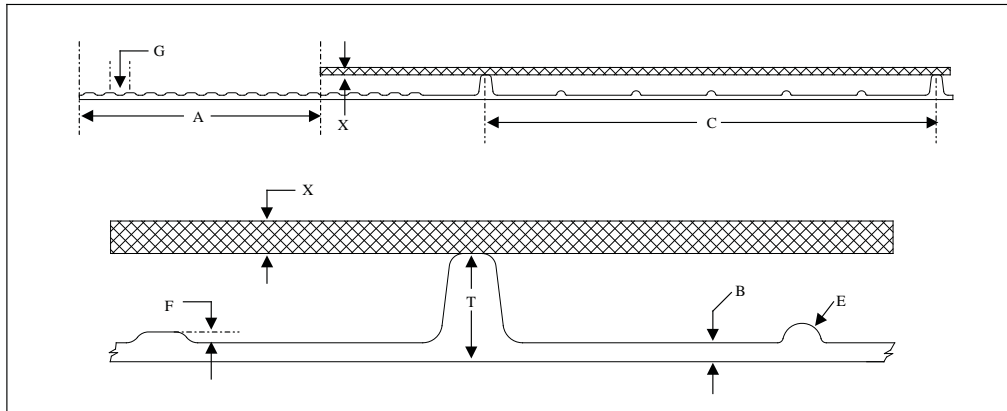
**ENTEK PE Glassmat** separator consists of a 100% glass fiber retainer mat laminated to the polyethylene separator. This is achieved by using a purpose-built laminating machine to apply a special adhesive to the ribs of the separator, and laminating the glass mat to the separator ribs. The resultant laminated separator material is supplied to the customer in roll form. It can therefore be used on enveloping machines in the same way as the standard polyethylene separator material.

**ENTEK PE Glassmat** should be specified in battery applications where an exceptionally heavy duty cycle is anticipated e.g. regular deep discharges. Examples include buses, taxis, commercial vehicles etc. The glass retainer mat in contact with the positive plate helps to protect the active material against shedding in deep discharge and high vibration conditions.



***ENTEK PE Glassmat helps to extend battery life under arduous operating conditions, e.g. high ambient temperatures and severe vibration.***

## Typical profile drawing and dimensions

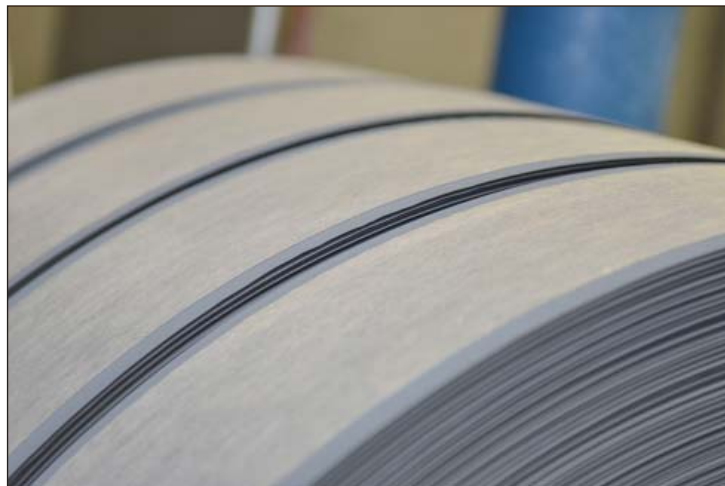


		<i>Dimensions - mm</i>	<i>Tolerance</i>
<b>W</b>	Separator width	Any	± 0.8
<b>T</b>	Thickness	0.6 - 1.4	± 0.08
<b>B</b>	Backweb	0.15 - 0.25	± 0.03
<b>S</b>	Shoulder	16.5	± 4.5
<b>C</b>	Major rib spacing	18.14	(@ 160mm)
<b>D</b>	Mini-rib spacing	3.02	(@ 160mm)
<b>E</b>	Mini-rib radius	0.18	
<b>F</b>	Shoulder rib height	0.10	
<b>G</b>	Shoulder rib spacing	0.825	
<b>A</b>	Land Area	5.0	

PE Glassmat - Key technical data @ 0.15mm backweb (Base material only)			
		<i>Nominal Value</i>	<i>Tolerance</i>
<b>Moisture</b>	%	4	5 max
<b>Oil content</b>	%	-	22 max
<b>Electrical resistance</b>	Ω.cm <sup>2</sup>	0.065	0.08 max
<b>Elongation XMD</b>	%	400	200 min
<b>Puncture</b>	N	6.5	5 min
<b>Porosity</b>	%	55	± 6

(Maximum ER dependent on profile)

(Typical dimensions as shown: other profiles may be available)



ENTEK is the leading world-wide producer of microporous polyethylene battery separators for lead-acid batteries. ENTEK is privately held and headquartered in Lebanon, Oregon, USA with manufacturing facilities in Lebanon and Newcastle-upon-Tyne, U.K.



RAISING EXPECTATIONS. KEEPING THEM THERE.

For more information:  
[sales@entek.com](mailto:sales@entek.com)  
 or call +1 541 259 3901 (US)  
 or +44 191 268 5054 (UK)  
[entek.com](http://entek.com)